



GAT MONTHLY MEMBERSHIP PROGRESS REPORT

Results as of: 6/30/2023

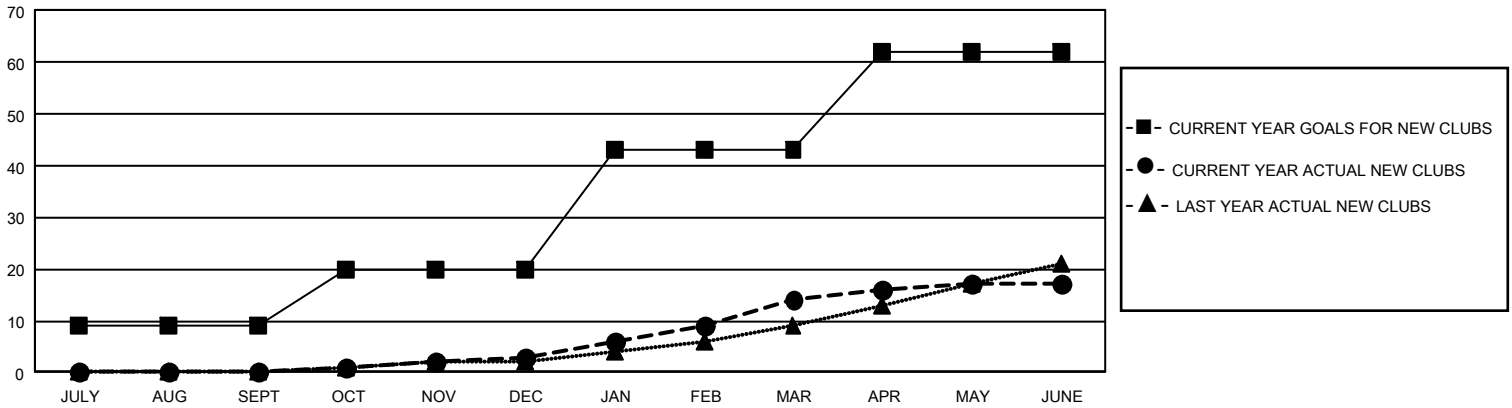
GAT Constitutional Area 5 - Japan

REPORT DOES NOT INCLUDE CLUBS IN UNDISTRICTED AREAS.

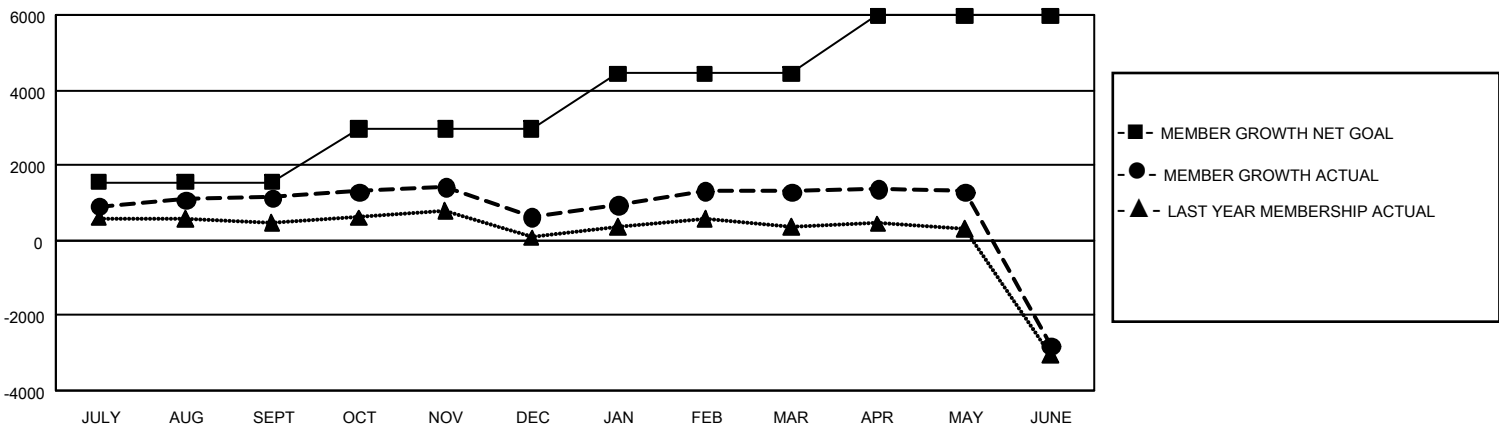
Clubs			
RESULTS FOR 2022-2023			
QUARTER	NEW CLUB GOAL	NEW CLUBS	DROPPED CLUBS
JULY/AUG/SEPT	27	0	5
OCT/NOV/DEC	33	3	5
JAN/FEB/MAR	69	11	3
APR/MAY/JUNE	57	3	52

Members			
RESULTS FOR 2022-2023			
QUARTER	MEMBER GROWTH NET GOAL	MEMBER GROWTH ACTUAL	DROPPED MEMBERS ACTUAL (including transfers)
JULY/AUG/SEPT	1540	2,714	1,429
OCT/NOV/DEC	1435	1,318	1,776
JAN/FEB/MAR	1461	2,078	1,313
APR/MAY/JUNE	1540	1,814	5,777

GOALS AND ACTUAL NEW CLUBS CUMULATIVE



GOALS AND ACTUAL MEMBERS CUMULATIVE



DROPPED CLUBS: 65	
DROPPED MEMBERS	
DECEASED	874
CLUB CANCELLED	138
OTHER	9,284
TOTAL	10,296

2,044 CLUBS OF 2,822 ADDED 1 OR MORE NEW MEMBERS

[CLICK HERE FOR CUMULATIVE MEMBERSHIP DATA](#)

GENDER DISTRIBUTION	
MALE	73,710 (76.62%)
FEMALE	22,481 (23.37%)
NON BINARY	0 (0.00%)
PREFER NOT TO ANSWER	8 (0.01%)
TOTAL FAMILY UNIT MEMBERS	31,718
FAMILY MEMBERS PAYING HALF DUES	17,485